

VAULT

INSTALLATION MANUAL

SNONO SYSTEMS ©
2018

FORWARD

This document describes the installation procedure of VAULT system on x86-64 bit host or virtual machine.

The manual covers the installation and configuration of the NAS (Mikrotik & Cisco) using PPPoE and hotspot setup.

Please note that SAS3 receives online updates from time to time , it is always recommended to update your software to the latest version before starting the configuration section.

INSTALLATION

Requirements

Minimum hardware requirements :

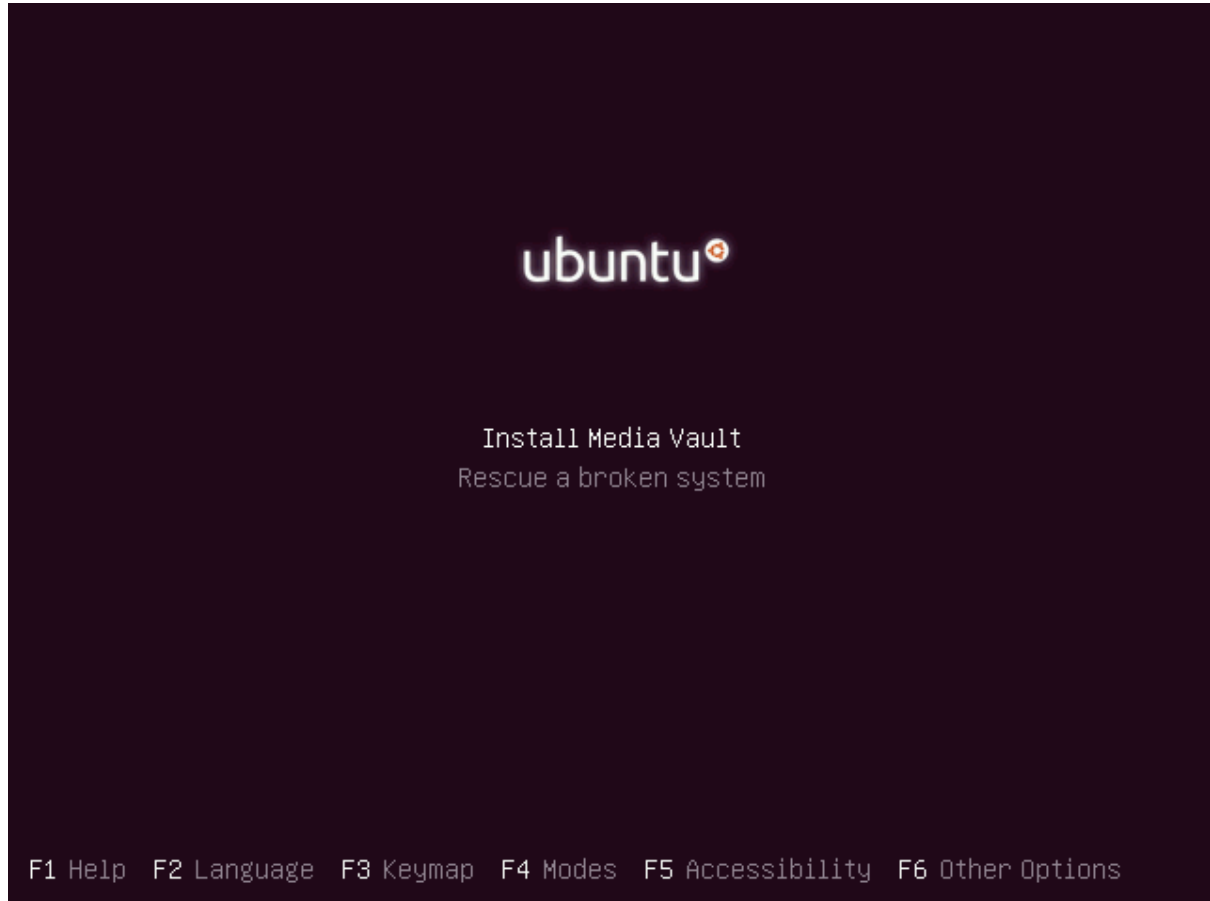
- Intel Core i5 or better (64bit CPU is mandatory)
- 4GB of RAM
- 128GB HDD or more (7200 RPM or better) - for system
- 1TB HDD or more (7200 RPM or better) - for media storage

Software Requirement :

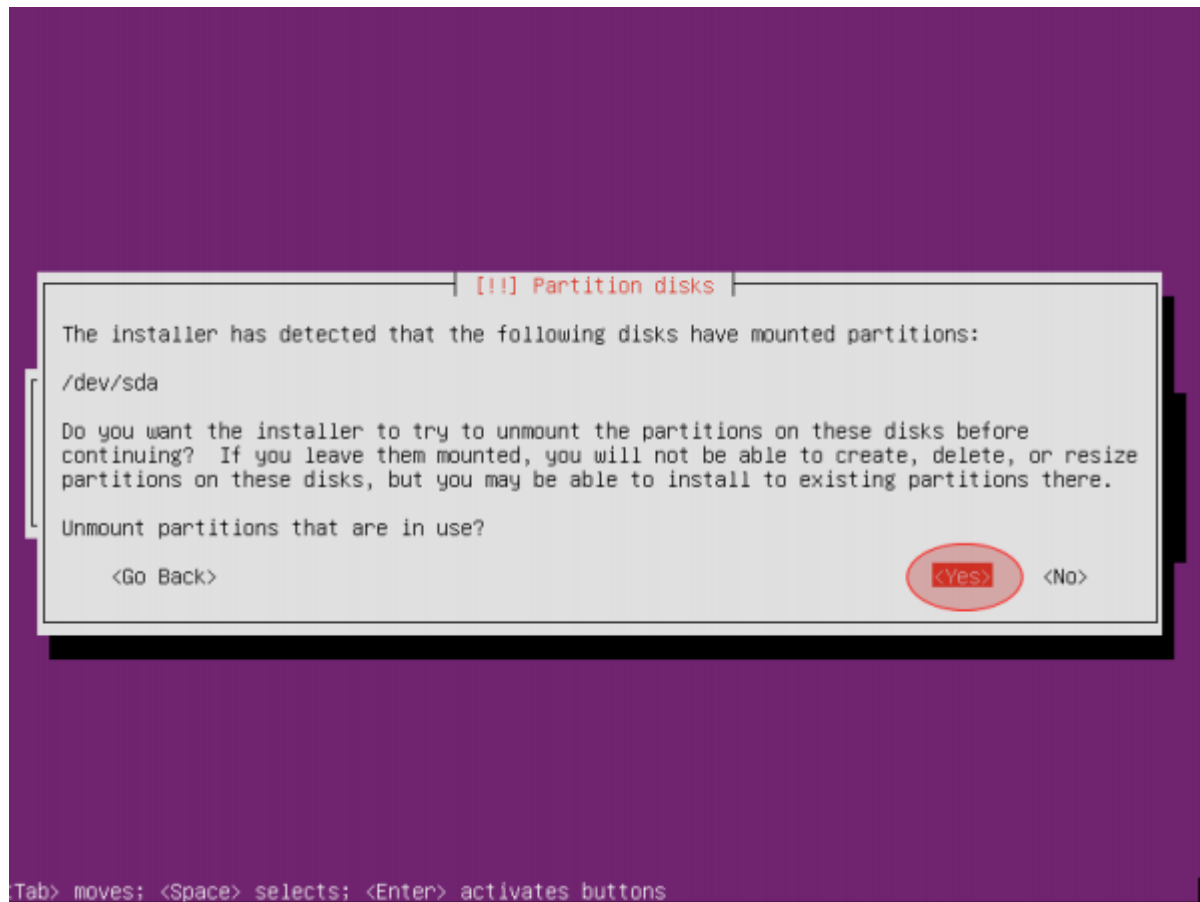
- VAULT ISO image which can be downloaded from www.snono-systems.com
- CD Burning software such as Nero on windows or K3B on Linux.

Starting Up

Boot the server using VAULT ISO image and select “Install Media Vault”



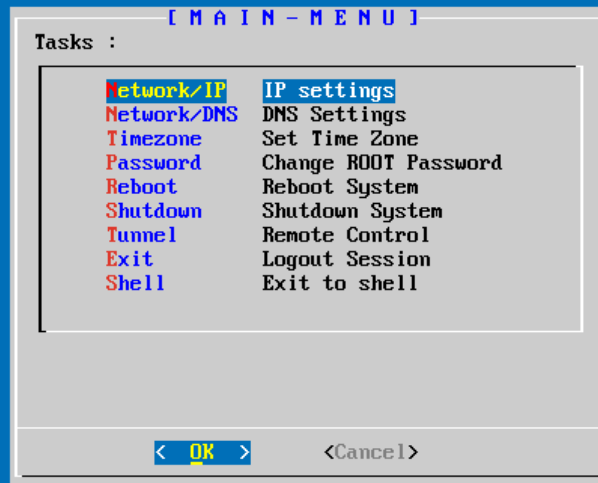
VAULT installation is fully automated. If you install on blank hard drive , no questions will be asked. Sometimes when the target disk has some partitions left on , VAULT will come up with the following screen. Select 'Yes' to continue.



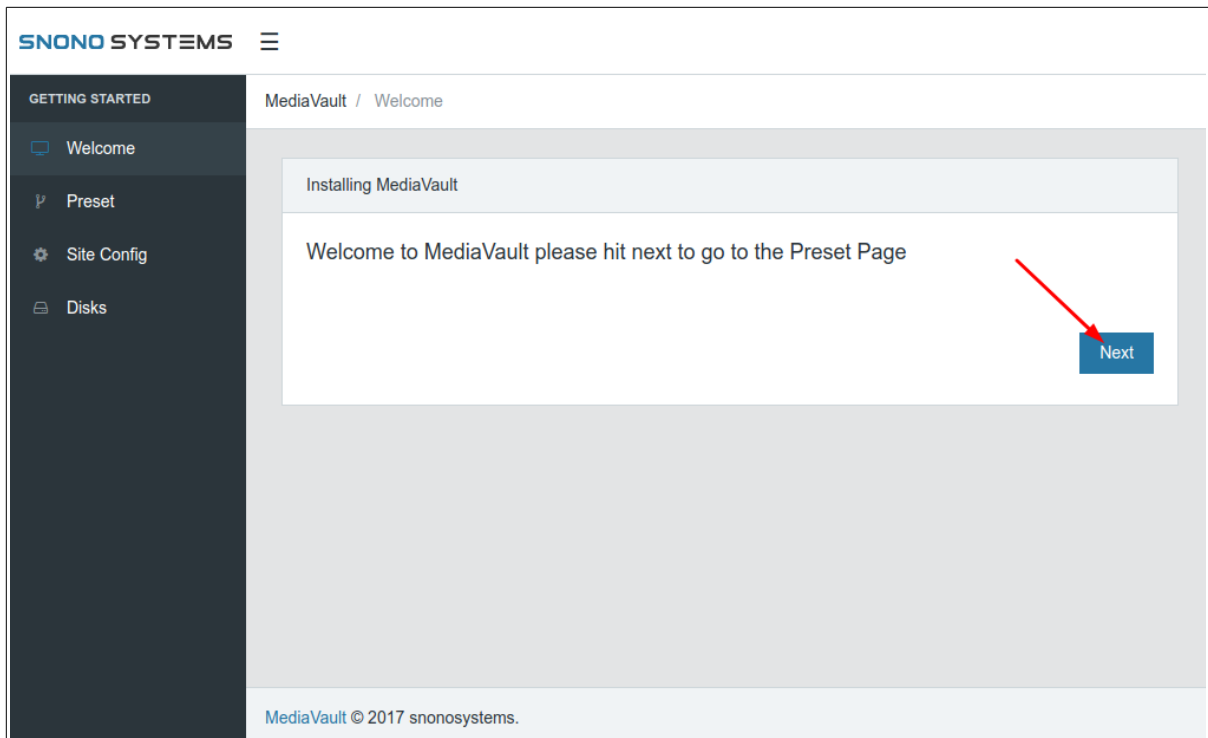
When installation is over, the server will reboot twice. When done, Linux login prompt will appear. Login using username (media) and password (media123).

```
Ubuntu 16.04.3 LTS vault tty1
vault login: _
```

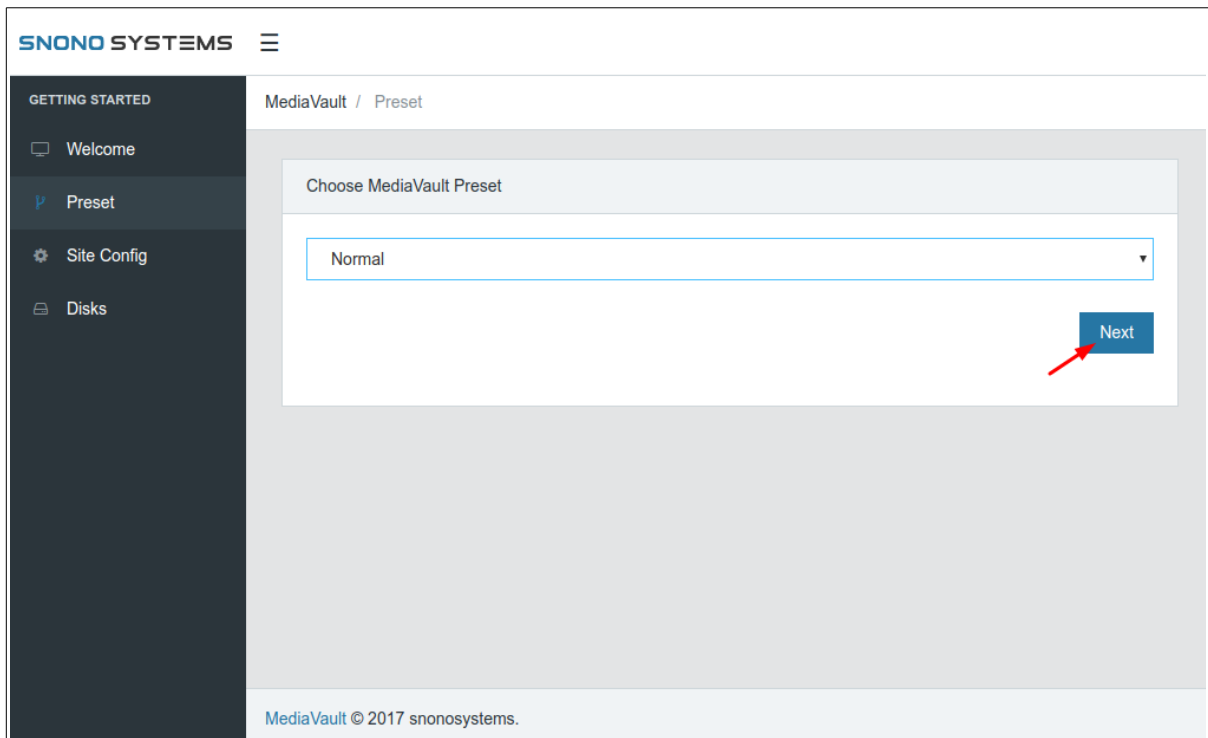
Set your IP address, netmask ,gateway & DNS server (very important).Also make sure you set your correct timezone



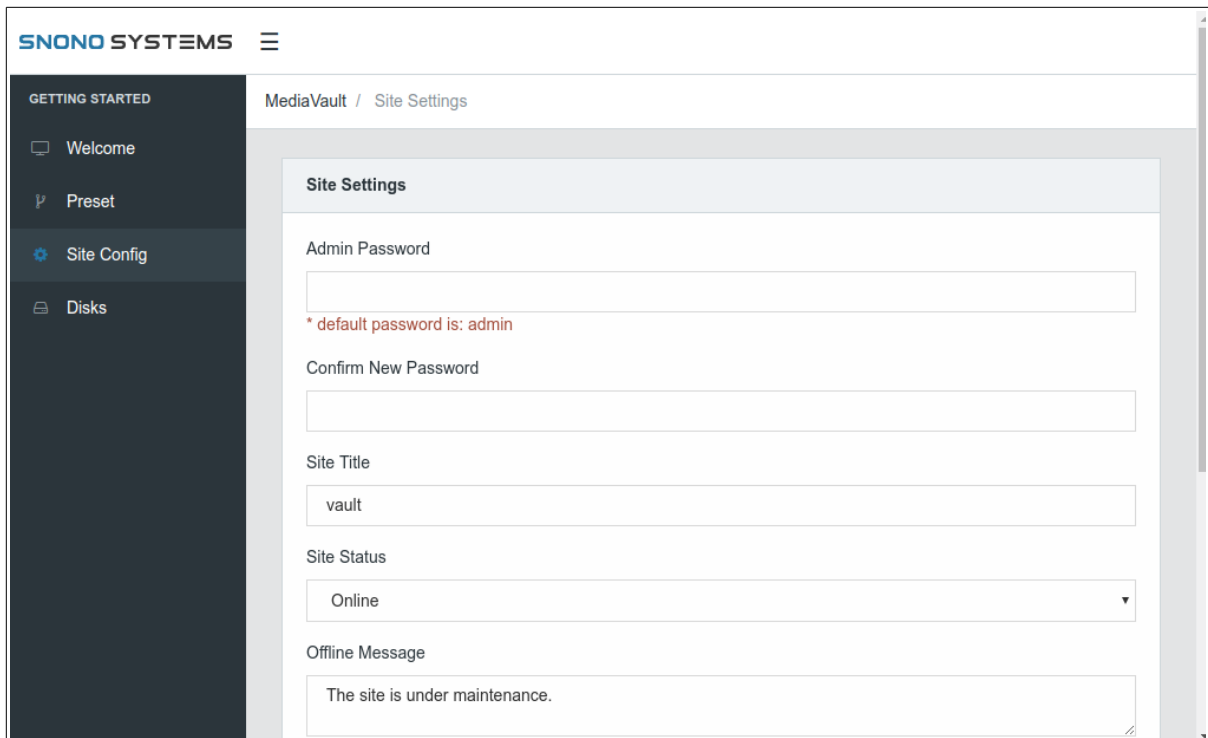
Now open your browser and enter your IP address (http://_your_vault_ip_address)



Hit "Next"



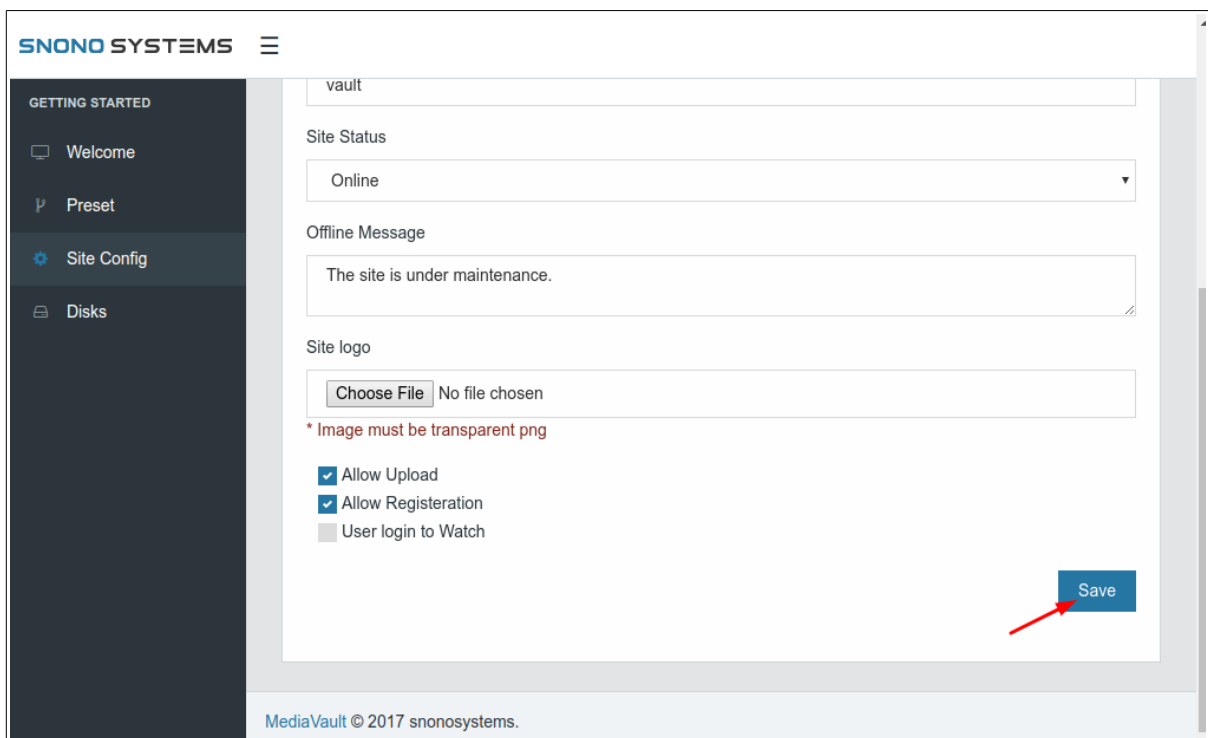
Choose "Normal" and hit "Next"



The site basic settings will show in this page you can customize your vault server web settings by edit the fields.

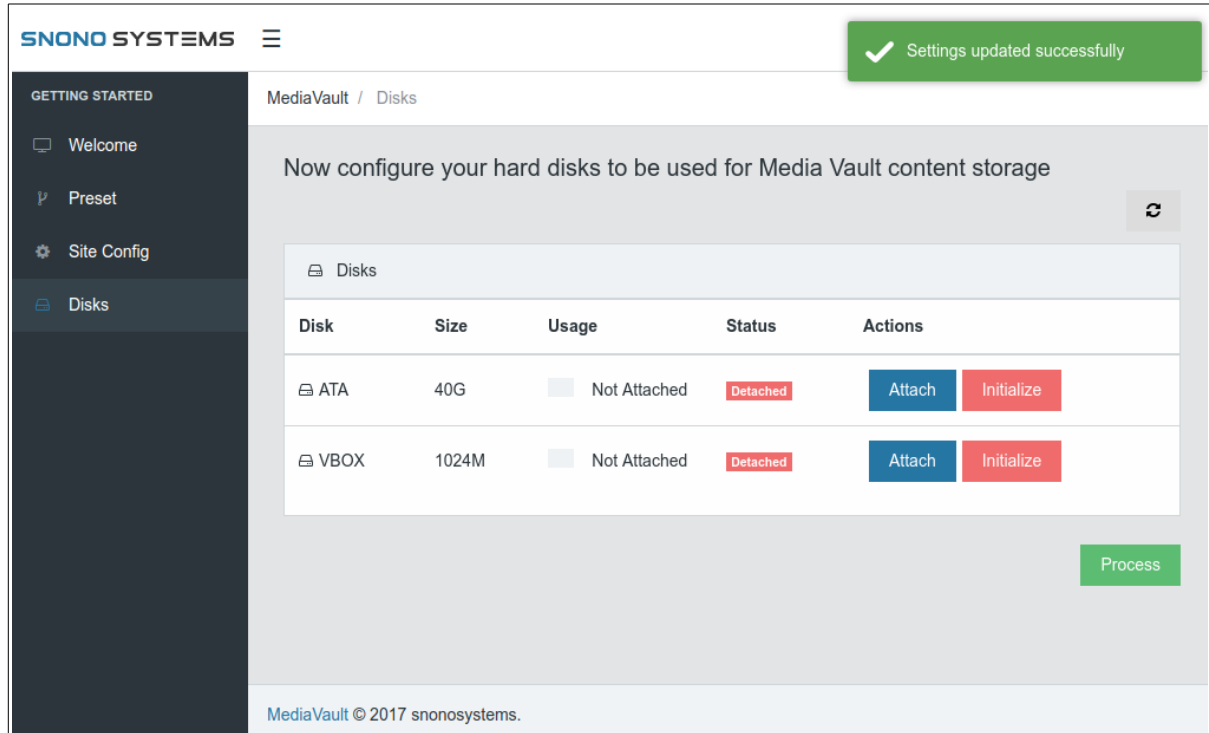
If there is no changes detect the default server configuration will take place.

When finish from this page hit “Save”



This step is very important, this step is about configure your vault storage and initialize it, that require a media storage cause in case you initialize it the data on disk all erase.

Select your HDD disk and initialize it, then press “Process”.



MediaVault / Disks

Now configure your hard disks to be used for Media Vault content storage

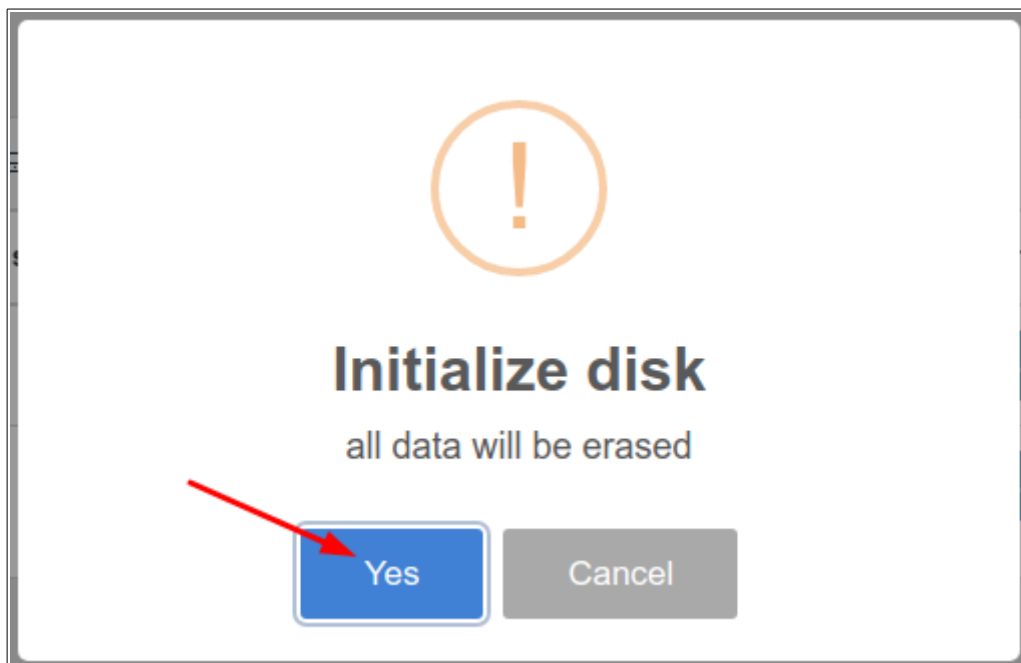
Disk	Size	Usage	Status	Actions
ATA	40G	Not Attached	Detached	Attach Initialize
VBOX	1024M	Not Attached	Detached	Attach Initialize

Process

MediaVault © 2017 snonosystems.

Disk	Size	Usage	Status	Actions
ATA	40G	Not Attached	Detached	Attach Initialize

Confirm initialize disk by press “Yes”



Initialize disk

all data will be erased

Yes Cancel

Please be patient cause this step take a while, do not try to restart the server or shut it down that may cause a disk damage.

MediaVault / Disks

Now configure your hard disks to be used for Media Vault content storage

Disk	Size	Usage	Status	Actions
ATA	40G	Not Attached	Detached	Attach Initialize
VBOX	1024M	Not Attached	Detached	Attach Initialize

Process

MediaVault © 2017 snonosystems.

When your chosen disk status is “Attached” then all your setup is going fine, press Process to continue

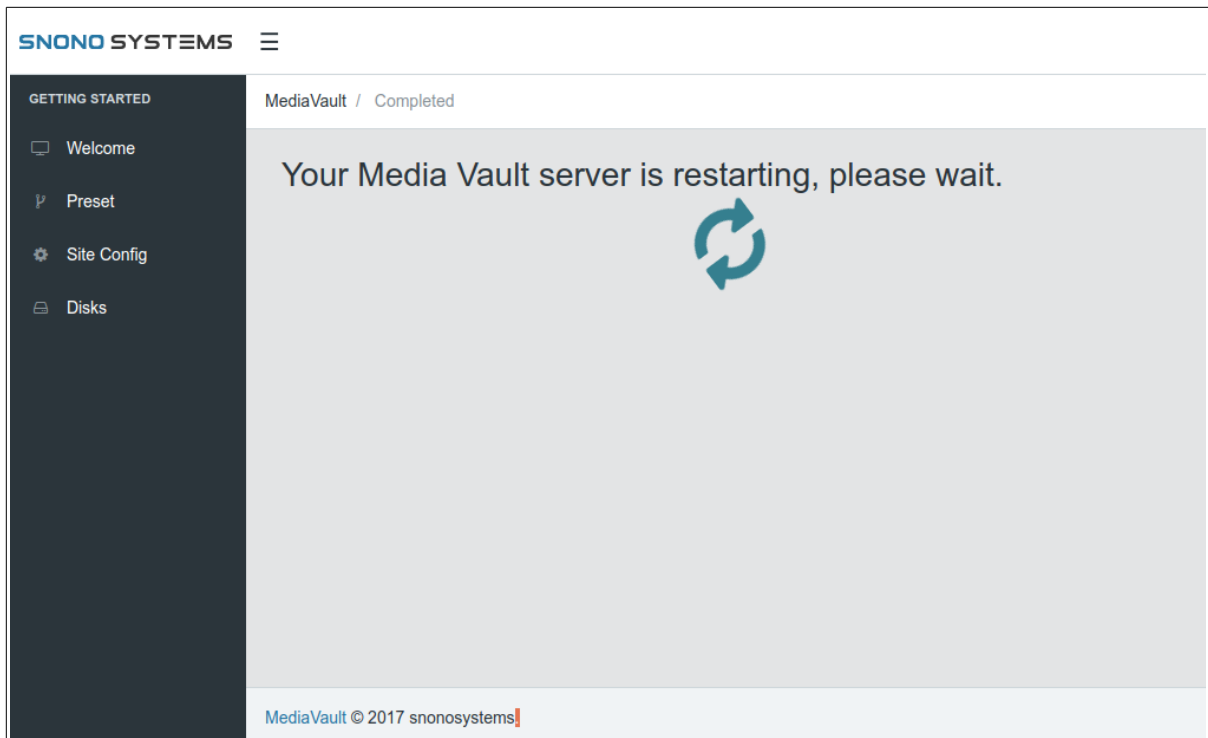
MediaVault / Disks

Now configure your hard disks to be used for Media Vault content storage

Disk	Size	Usage	Status	Actions
ATA	40G	5.25%	Attached	Detach
VBOX	1024M	Not Attached	Detached	Attach Initialize

Process

MediaVault © 2017 snonosystems.



Wait until the server is reboot and the login page will show using username & password : **admin/admin**

